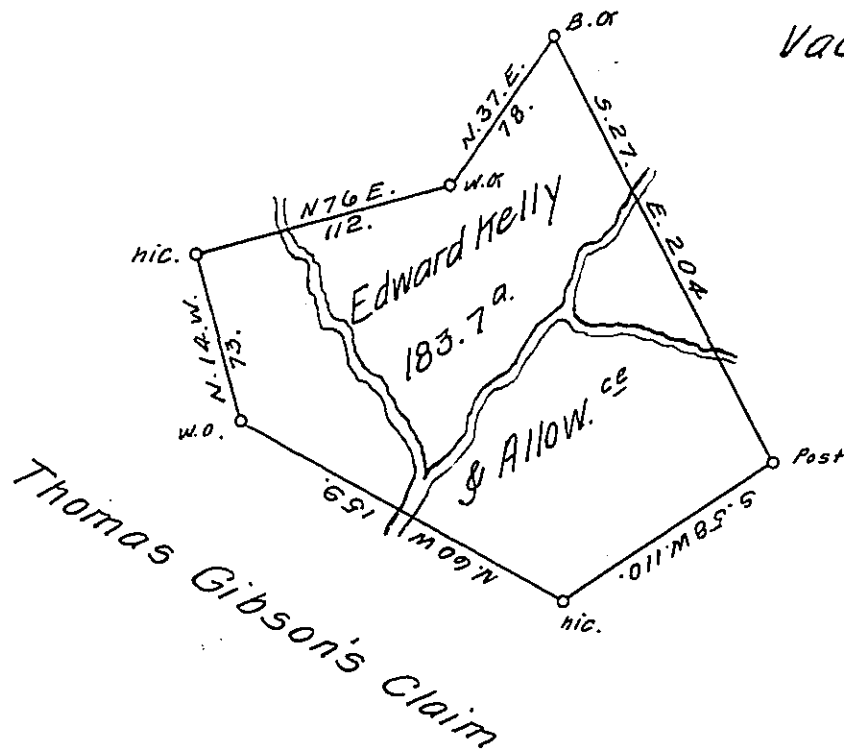


Vac<sup>t</sup> Land

Vac<sup>t</sup> Land



Survey<sup>d</sup> to Edward Kelly on the 20<sup>th</sup> June 1776. The above Descri-  
 bed Tract of One hundred eighty three Acres & three Quarters of  
 an Acre & Allowance of Six & C<sup>t</sup>. Situate on the Waters of Black Lick upon  
 a Run called Gibson's Run. bounded on the South by Thomas Gib-  
 son & on the East by Samuel Toddy's Claim including his Improve-  
 ment in Westmorland County. By Warrant of the 11<sup>th</sup> Day of Feb<sup>r</sup>.  
 1775.

By Joshua Elder. D.S.

To John Lukens Esq<sup>r</sup>: S. Gen<sup>l</sup>.

IN TESTIMONY that the above is a copy of the original remaining on file in  
 the Department of Internal Affairs of Pennsylvania, made  
 conformably to an Act of Assembly approved the 16th day of  
 February, 1833, I have hereunto set my Hand and caused  
 the Seal of said Department to be affixed at Harrisburg,  
 this first day of March 1912.

*Henry Horch*  
 Secretary of Internal Affairs.